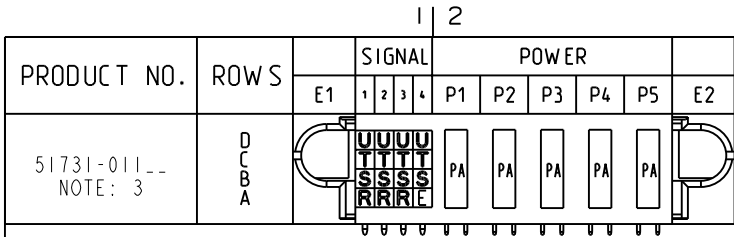


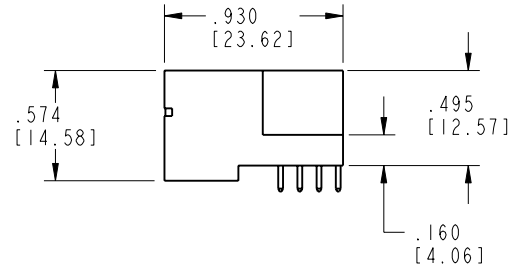
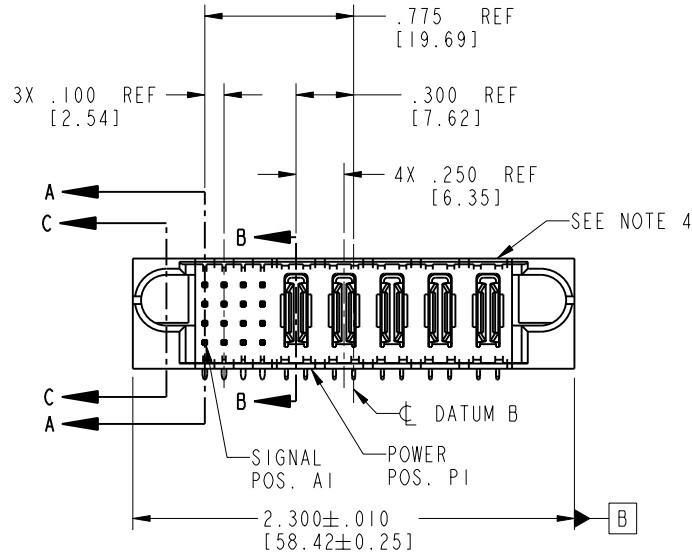
Tous droits strictement réservés. Reproduction ou communication o des liers interdite sous quelque forme que ce soit sans autorisation écrite du propriétaire. Propriete de c FCI. Droits de reproduction FCI.

All rights strictly reserved. Reproduction or issue to third parties in any form whenever is not permitted without written authority from the proprietor. Property of FCI. Copyright FCI.



PRODUCT NO. 51731-011--
NOTE: 3

ROWS
D
C
B
A



CODE	DIM "M" MATING LENGTH	CONTACT TYPE
E	.220 [5.59]	SIGNAL
R	.270 [6.86]	SIGNAL
S	.270 [6.86]	SIGNAL
T	.270 [6.86]	SIGNAL
U	.270 [6.86]	SIGNAL
PA	N/A [N/A]	POWER

mat'l code SEE NOTE 2				tolerances unless otherwise specified		CUSTOMER		www.fciconnect.com title 16S + 5P RIGHT ANGLE SOLDER HEADER	
ltr	ecr no.	dr	date	linear	angles	COPY			
A	Y20636	JWS	04-01-02	.XX±.01/0.X±0.3	0°±2°	projection			
B	DG05-0458	GuoJM	11/19/05	.XXX±.005/0.XX±0.13		INCH/MM			
				.XXX±.0020/0.XXX±0.051		scale 1:1			
				dr J. SHAFFER 04-01-02		product family PwrBlade			
				enrg J. ALLISON 04-01-02		code 213			
				chr J. ALLISON 04-01-02		size 51731-011			
				appd J. ALLISON 04-01-02		sheet 1 of 4			
sheet index	revision sheet	B 1	B 2	B 3	B 4	cage code 22526			

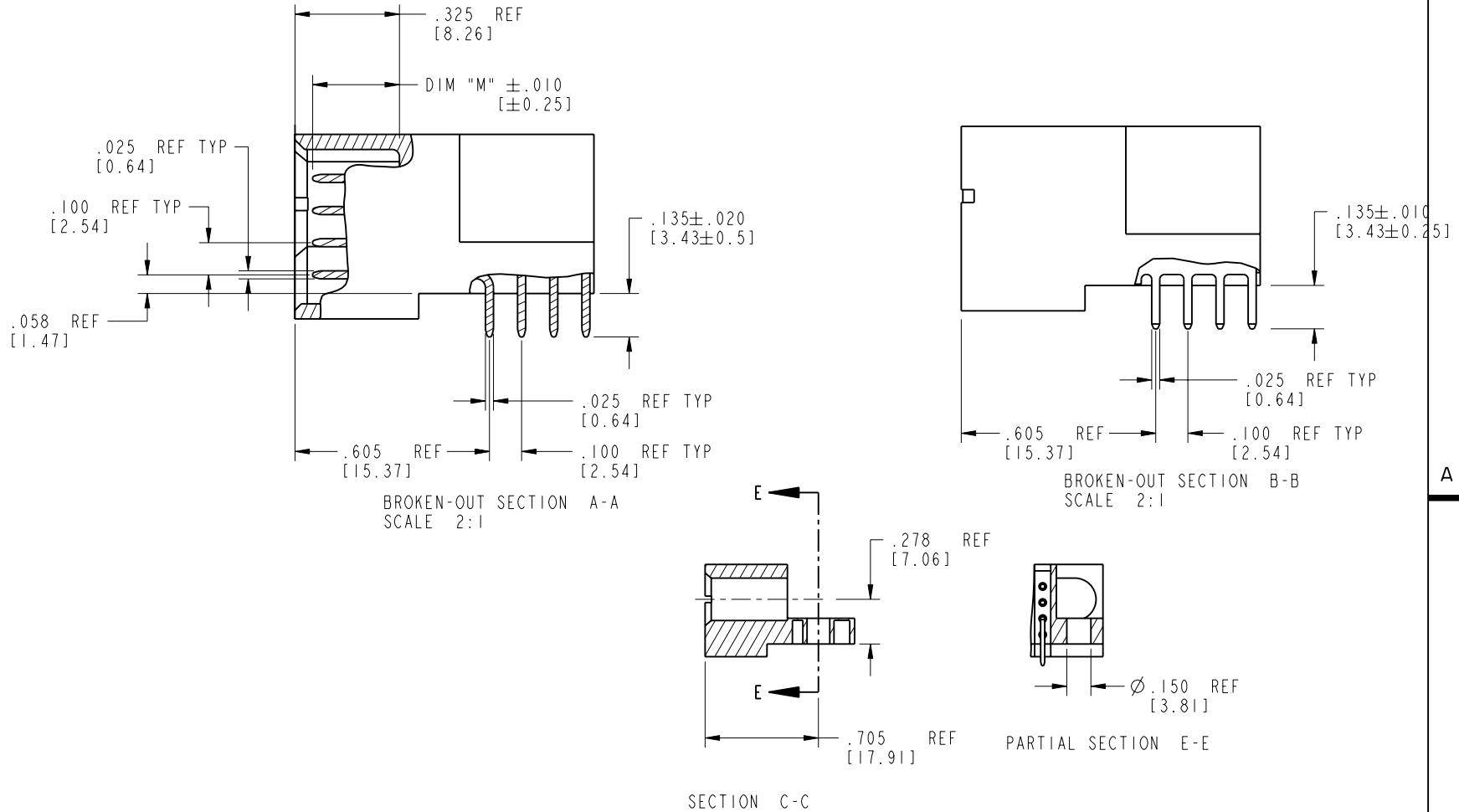
Pro/E

cage code 22526

Tous droits strictement réservés. Reproduction ou communication o des liens interdite sous quelque forme que ce soit sans autorisation écrite du propriétaire. Propriété de c FCI. Droits de reproduction FCI.

All rights strictly reserved. Reproduction or issue to third parties in any form, whenever is not permitted without written authority from the proprietor. Property of FCI. Copyright FCI.

PRODUCT NUMBER
51731-011--
NOTE: 3



mat'l code		SEE NOTE 2		tolerances unless otherwise specified		CUSTOMER		 www.fciconnect.com	
ltr	ecn no.	dr	date	linear	.XX±.01/0.XX±0.3	COPY			
B				linear	.XXX±.005/0.XX±0.13	projection		title	
				angles	.XXX±.0020/0.XX±0.051			16S + 5P	
				dr	J. SHAFFER 04-01-02	INCH/MM		RIGHT ANGLE SOLDER HEADER	
				engr	J. ALLISON 04-01-02	scale		product family	
				chr	J. ALLISON 04-01-02	1:1		PwrBlade	
				appd	J. ALLISON 04-01-02			code	
sheet index	revision sheet							size	
								dwg no	
								A 51731-011	
								sheet	
								2 of 4	

Pro/E

cage code 22526

PDM: Rev:B

STATUS: Released

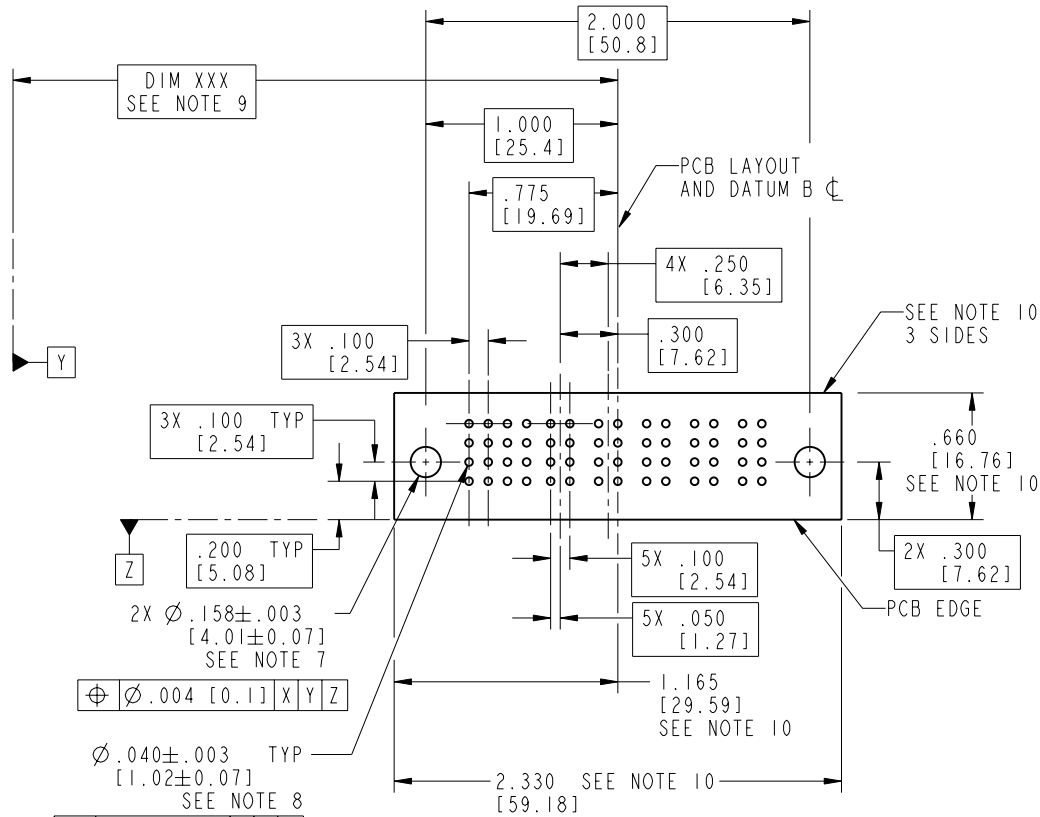
Printed: Aug 13, 2007

Tous droits strictement réservés. Reproduction ou communication o des liens interdite sous quelque forme que ce soit sans autorisation écrite du propriétaire. Propriété de c FCI. Droits de reproduction FCI.

FCI

All rights strictly reserved. Reproduction or issue to third parties in any form, whenever is not permitted without written authority from the proprietor. Property of FCI. Copyright FCI.

PRODUCT NUMBER
51731-011--
NOTE: 3



RECOMMENDED PCB LAYOUT

mat'l code		SEE NOTE 2		tolerances unless otherwise specified		CUSTOMER		 www.fciconnect.com	
lfr	ecn no.	dr	date	linear	.XX±.01/0.X±0.3	COPY			
B					.XXX±.005/0.XX±0.13	projection		 title 16S + 5P RIGHT ANGLE SOLDER HEADER	
				angles	.XXX±.0020/0.XXX±0.051	INCH/MM			
				dr	J. SHAFFER 04-01-02	scale		product family PwrBlade code 213 size dwg no 51731-011 sheet 3 of 4	
				engr	J. ALLISON 04-01-02	1:1			
				chr	J. ALLISON 04-01-02			coge code 22526	
				appd	J. ALLISON 04-01-02				
sheet index	revision sheet								

Pro/E

PDM: Rev:B

STATUS: Released

Printed: Aug 13, 2007

Tous droits strictement réservés. Reproduction ou communication o des liers interdite sous quelque forme que ce soit sans autorisation écrite du propriétaire. Propriete de c FCI. Droits de reproduction FCI.

FCI

All rights strictly reserved. Reproduction or issue to third parties in any form, whenever is not permitted without written authority from the proprietor. Property of FCI. Copyright FCI.

1 | 2

3 |

4

PRODUCT NUMBER

51731-011__
NOTE: 3

NOTES:

1. DIMENSIONS AND TOLERANCES ARE IN ACCORDANCE WITH ASME Y14.5M, 1994 UNLESS OTHERWISE SPECIFIED.

CONNECTOR NOTES:

2. HOUSING MATERIAL: UL 94 V-0 GLASS FILLED HIGH-TEMP THERMOPLASTIC
POWER CONTACT MATERIAL: COPPER ALLOY
SIGNAL PIN MATERIAL: COPPER ALLOY

3. PLATING:

51731-011 Singal Pin:30u"/0.76um Au OVER 50u"/1.27um Ni ON THE CONTACT AREA.
AND 100u"/2.54um SnPb PLATING OVER 50u"/1.27um Ni ON THE TERMINATION SECTION.
Power Pin:30u"/0.76um Au OVER 50u"/1.27um Ni ON THE CONTACT AREA,
AND 100u"/2.54um SnPb PLATING OVER 50u"/1.27um Ni ON THE TERMINATION SECTION.

51731-011LF Singal Pin:30u"/0.76um Au OVER 50u"/1.27um Ni ON THE CONTACT AREA.
AND 78u"/2.00um Sn PLATING OVER 50u"/1.27um Ni ON THE TERMINATION SECTION.
Power Pin:30u"/0.76um Au OVER 50u"/1.27um Ni ON THE CONTACT AREA,
AND 78u"/2.00um Sn PLATING OVER 50u"/1.27um Ni ON THE TERMINATION SECTION.

PART NUMBER 51731-011LF MEETS EUROPEAN UNION DIRECTIVE AND OTHER)COUNTRY REGULATIONS AS DESCRIBED IN GS-22-008.

THE HOUSING WILL WITHSTAND EXPOSURE TO 260° PEAK TEMPERATURE FOR 10 SECONDS IN A WAVE SOLDER APPLICATION WITH A CIRCUIT BOARD.

4. MANUFACTURER'S NAME, P/N, AND DATE CODE TO APPEAR ON THIS SURFACE.

5. PRODUCT SPECIFICATION GS-12-149.
APPLICATION SPECIFICATION BUS-20-067.


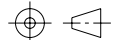
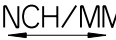
PCB NOTES:

6. ALL HOLE DIAMETERS ARE FINISHED HOLE SIZE.
7. MOUNTING HOLES, WHERE APPLICABLE, ARE UNPLATED.

8. $\varnothing .0453 \pm 0.0010$ [1.151 \pm 0.025] DRILLED HOLES PLATED WITH 0.0003 [0.008] MIN SnPb OVER .001 [0.03] TO .003 [0.08] Cu PLATING TO ACHIEVE $\varnothing .040 \pm .003$ [1.02 \pm .07] HOLE.

9. "DIM XXX" TO BE DETERMINED BY THE CUSTOMER.

10. CONNECTOR KEEP-OUT ZONE.

mat'l code				SEE NOTE 2		tolerances unless otherwise specified		CUSTOMER		 www.fciconnect.com	
lfr	ecr no.	dr	date	linear	.XX \pm .01 / 0.X \pm 0.3		COPY		 title 16S + 5P RIGHT ANGLE SOLDER HEADER		
B					angles	.XXX \pm .005 / 0.XX \pm 0.13 .XXX \pm .0020 / 0.XXX \pm 0.051 0 \pm 2°		 product family PwrBlade code 213 size dwg no 51731-011 sheet 4 of 4			
				dr	J. SHAFFER	04-01-02	INCH/MM		scale 1:1 A		
				enrg	J. ALLISON	04-01-02					
				chr	J. ALLISON	04-01-02					
				appd	J. ALLISON	04-01-02					
sheet index	revision sheet										

1 | 2

Pro/E

3 |

coge code 22526

4